

# Wisdompoint Capital Ltd

**DISCLOSURE AND MARKET DISCIPLINE REPORT FOR 2022**

*Regulated by the Cyprus Securities and Exchange Commission License no [219/13].*

## DISCLOSURE

*The Disclosure and Market Discipline Report for the year 2022 has been prepared by Wisdompoint Capital Ltd as per the requirements of Regulation (EU) 2019/2033 issued by the European Commission.*

*Wisdompoint Capital Ltd states that any information that was not included in this report was either not applicable on the Company's business and activities -OR- such information is considered as proprietary to the Company and sharing this information with the public and/or competitors would undermine our competitive position.*

**Contact Us**

**Address**

Andrea Zappa 1, Office/ Flat 1, 4040, Limassol

**Telephone**

+357 25 257 780

**Fax**

[wisdompointcapital.com](http://wisdompointcapital.com)

**Web site**

[customers@trader.net.cy](mailto:customers@trader.net.cy)

**Email**

Andrea Zappa 1, Office/ Flat 1, 4040, Limassol



*The Board of Directors is ultimately responsible for the risk management framework of the Company. The Risk Management framework is the sum of systems, policies, processes, and people within the Company that identify, assess, mitigate and monitor all sources of risk that could have a material impact on the Company's operations.*

*The Board of Directors approves in full the adequacy of Risk Management arrangements of the institution providing assurance that the risk management systems in place are adequate with regards to the institution's profile and strategy.*



<b>1. INTRODUCTION .....</b>	<b>7</b>
1.1. INVESTMENT FIRM .....	7
1.2. CLASSIFICATION AND PRUDENTIAL REQUIREMENTS .....	7
1.3. PURPOSE .....	8
1.4. THE COMPANY .....	10
1.5. REGULATORY SUPERVISION .....	10
<b>2. GOVERNANCE AND RISK MANAGEMENT .....</b>	<b>12</b>
2.1. RISK MANAGEMENT OBJECTIVES AND POLICIES .....	12
2.2. TYPES OF RISKS .....	13
2.3. RISK APPETITE .....	14
2.4. RISK STRATEGY .....	15
2.5. INTERNAL CAPITAL ADEQUACY AND RISK ASSESSMENT PROCESS .....	16
2.6. DECLARATION OF THE MANAGEMENT BODY .....	16
2.7. STRESS TESTS .....	17
2.8. RISK MANAGEMENT COMMITTEE .....	18
2.9. DIVERSITY POLICY .....	18
2.10. BOARD RECRUITMENT .....	19
2.11. REMUNERATION .....	19
2.12. PERFORMANCE RELATED PAY .....	20
2.13. DIRECTORSHIPS HELD BY MEMBERS OF THE MANAGEMENT BODY .....	21
2.14. REPORTING AND CONTROL .....	22
<b>3. CAPITAL MANAGEMENT AND ADEQUACY .....</b>	<b>23</b>
3.1. THE REGULATORY FRAMEWORK .....	23
3.2. REGULATORY CAPITAL .....	24
3.3. SOLVENCY RATIO (CAPITAL RATIO OR CAPITAL ADEQUACY RATIO) .....	24
3.4. CAPITAL MANAGEMENT .....	25
<b>4. CAPITAL REQUIREMENTS .....</b>	<b>28</b>
4.1 K-FACTOR REQUIREMENT .....	28
<b>5. OPERATIONAL RISK .....</b>	<b>31</b>
5.1. FIXED OVERHEADS RISK .....	32
<b>6. EXTERNAL ENVIRONMENT RISKS .....</b>	<b>33</b>
6.1. PANDEMIC RISK .....	33
6.2. POLITICAL RISKS .....	33
<b>7. INFORMATION TECHNOLOGY RISK .....</b>	<b>33</b>
<b>8. LIQUIDITY RISK .....</b>	<b>33</b>
<b>9. COMPLIANCE, REPUTATIONAL AND LEGAL RISKS .....</b>	<b>35</b>
9.1. COMPLIANCE TRANSFORMATION PROGRAMME .....	36
9.2. PREVENTION OF MONEY LAUNDERING AND TERRORISM FINANCING .....	36
<b>10. ENVIRONMENTAL SOCIAL AND GOVERNANCE RISK .....</b>	<b>37</b>
<b>11. APPENDIX .....</b>	<b>38</b>



<b>Table 1: Company information</b>	<b>7</b>
<b>Table 2: Threshold Criteria</b>	<b>8</b>
<b>Table 3: Aggregate Quantitative Information on Remuneration broken down by business area</b>	<b>20</b>
<b>Table 4: Directorships held by Members of the Management Body</b>	<b>21</b>
<b>Table 5: Periodic Reporting Summary</b>	<b>22</b>
<b>Table 6: Capital Requirements</b>	<b>26</b>
<b>Table 7: Regulatory Capital</b>	<b>27</b>
<b>Table 8: K-Factor Breakdown</b>	<b>29</b>
<b>Table 9: Liquidity Requirements</b>	<b>30</b>
<b>Table 10: EU IF CC1.01 – Composition of regulatory own funds</b>	<b>38</b>
<b>Table 11: EU IFCC2: Own funds: reconciliation of regulatory own funds to balance sheet in the audited financial statements.</b>	<b>39</b>



<b>Abbreviation</b>	<b>Full description</b>
BoD	Board of Directors
CAR	Capital Adequacy Ratio
CCR	Counterparty Credit Risk
CET1	Common Equity Tier 1
CIF	Cyprus Investment Firm
CRD IV	Capital Requirements Directive
CRR	Capital Requirements Regulation
EBA	European Banking Authority
ECB	European Central Bank
EMIR	European Market Infrastructure Regulation
ESMA	European Securities and Markets Authority
ESRB	European Systemic Risk Board
FATF	Financial Action Task Force
FOH	Fixed Overheads
GDPR	General Data Protection Regulation
IAS	International Accounting Standards
ICARA	Internal Capital Adequacy and Risk Assessment Process
ICF	Investors Compensation Fund
IFD	Investment firm Directive
IFR	Investment Firm Regulation
IFRS	International Financial Reporting Standards
IOM	Internal Operations Manual
MIFID II	Markets in Financial Instruments Directive 2014
OECD	Organisation for Economic Co-Operation and Development
OTC	Over the Counter
PRIIP	Packaged Retail and Insurance-based Investment Products
PSP	Payment Service Provider
RAG	Red-Amper-Green
RAS	Risk Appetite Statement
RBS-F	Risk Based Supervision Framework
RMF	Risk Management Framework
RWA	Risk Weighted Assets
SME	Small and Medium-sized Enterprise
CySEC	Cyprus Securities and Exchange Commission



## 1. Introduction

### 1.1. Investment Firm

Company's Information	
CIF AUTHORIZATION DATE	30/10/2013
CIF LICENSE NUMBER	219/13
COMPANY REGISTRATION DATE	30/05/2012
COMPANY REGISTRATION NUMBER	HE 307126
<b>INVESTMENT SERVICES:</b>	
➤ RECEPTION AND TRANSMISSION OF ORDERS IN RELATION TO ONE OR MORE FINANCIAL INSTRUMENTS	
➤ EXECUTION OF ORDERS ON BEHALF OF CLIENTS	
<b>ANCILLARY SERVICES:</b>	
➤ SAFEKEEPING AND ADMINISTRATION OF FINANCIAL INSTRUMENTS, INCLUDING CUSTODIANSHIP AND RELATED SERVICES	
➤ GRANTING CREDITS OR LOANS TO ONE OR MORE FINANCIAL INSTRUMENTS, WHERE THE FIRM GRANTING THE CREDIT OR LOAN IS INVOLVED IN THE TRANSACTION	
➤ FOREIGN EXCHANGE SERVICES WHERE THESE ARE CONNECTED TO THE PROVISION OF INVESTMENT SERVICES	
➤ INVESTMENT SERVICES AND ACTIVITIES AS WELL AS ANCILLARY SERVICES WHERE THESE ARE CONNECTED TO THE PROVISION OF INVESTMENT AND ANCILLARY SERVICES	

Table 1: Company information

### 1.2. Classification and Prudential Requirements

The Investment Firms Directive (EU) 2019/2034 (“IFD”) and the Investment Firm Regulation, Regulation (EU) 2019/2033 (“IFR”) entered into force on 26 July 2021, introducing a new classification system for investment firms, based on their activities, systemic importance, size and interconnectedness. All investment firms are classified as Class 1, 2 or 3 Investment Firms.

Class 1 Investment Firms are the largest and most interconnected investment firms, with risk profiles similar to those of significant credit institutions, have equal treatment with credit institutions in the sense of a level playing field accordingly and they will fall entirely under the Regulation (EU) No 575/2013 (“CRR”). Investment Firms categorized as Class 2 and Class 3 will have the most impact from the new prudential framework as, the capital requirements, reporting requirements and internal governance policies are subject to the provisions of IFR/IFD.

CIFs that meet all of the below criteria are categorised as Class 3 Investment Firms while when they exceed any of the following specific size thresholds, they are categorised as Class 2 Investment Firms.



<b>No.</b>	<b>Metric</b>	<b>Thresholds</b>
1.	Assets Under Management	<€1.2 billion
2.	Client orders handled – cash trades	< €100 million per day
3.	Client orders handled – derivative trades	<€1 billion per day
4.	Assets safeguarded and administered	zero
5.	Client money held	zero
6.	On- and off-balance sheet total	< €100 million
7.	Total annual gross revenue from investment services and activities	< €30 million

Table 2: Threshold Criteria

Further to the above, the Company is categorized as a Class 2 Investment Firm since it does not meet all of the above criteria and as such it should maintain own funds of at least the higher between:

**Permanent minimum capital requirement** - The permanent minimum capital requirement of the Company is €150k since it is not authorized to provide the investment service of “dealing on own account” but its authorized to provide the investment services of “reception, transmission and execution of orders”.

**Fixed overhead requirements** - The Fixed Overheads Requirement is calculated as one quarter ( $\frac{1}{4}$ ) of the previous year fixed expenses (based on audited figures).

**K-Factors requirement** - The new K-Factors are quantitative indicators that reflect the risk that the new prudential regime intends to address. Specifically, capital requirements from applying the K-factors formula (pursuant to Article 15 of the IFR) is the sum of Risk to Client ('RtC'), Risk to Market ('RtM') and Risk to Firm ('RtF') proxies.

### 1.3. Purpose

The present report is prepared by Wisdompoint Capital Ltd (the “Company”), a Cyprus Investment Firm (“CIF”) authorized and regulated by the Cyprus Securities and Exchange Commission (the “CySEC”, the “Commission”) under the license number 219/13 and operates in harmonisation with the Markets in Financial Instruments Directive (“MiFID II”).

In accordance with Regulation (EU) No. 2019/2033 (the Investment Firm Regulation, “IFR”), which was introduced in June 2021, the Company is required to disclose information relating to its risk exposure and management, capital structure, capital adequacy as well as the most important characteristics of the





Company's corporate governance including its remuneration system. The scope of this report is to promote market discipline and to improve transparency of market participants.

This document is updated and published annually; it will, however, be published more frequently if there are significant changes to the business (such as changes to the scale of operations, range of activities, etc.). CySEC is responsible for implementing and enforcing the European Capital Requirements legal framework, a capital adequacy framework consisting of three 'pillars':

- **Pillar I** sets minimum capital requirements comprising of base capital resources requirements
- **Pillar II** requires firms to undertake an overall internal assessment of their capital adequacy, taking into account all the which the firm is exposed to and whether additional capital should be held to cover risks not adequately covered by Pillar I requirements. This is achieved through the Internal Capital Adequacy and Risk Assessment Process ("ICARA")
- **Pillar III** complements Pillars I and II and improves market discipline by requiring firms to disclose information on their capital resources and Pillar I capital requirements, risk exposures and their risk management framework

The 2022 Pillar III Disclosures Report sets out both quantitative and qualitative information required in accordance with part six of the IFR and in particular articles 46 to 53, which set the requirements of the disclosures.

The information contained in the Pillar III Market Discipline and Disclosure Report is audited by the Firm's external auditors and published on the Company's website at [[www.wisdompointcapital.com](http://www.wisdompointcapital.com)] on an annual basis.

Furthermore, the Board of Directors and the Senior Management have the overall responsibility for the internal control systems in the process of capital and liquidity adequacy assessment and they have established effective processes to ensure that the full spectrum of risks faced by the Company is properly identified, measured, monitored, and controlled to minimise adverse outcomes.

The Company's business effectiveness is based on the guidelines of the risk management policies and procedures put in place. The Board of Directors, Internal Audit, Risk Manager, Compliance and Anti-Money Laundering Officer control and supervise the overall risk system so that all units charged with risk management perform their roles effectively on a continuous basis.

The Company is making the disclosures on a solo basis. This report has been prepared using the Audited Financial Statements.



## 1.4. The Company

Wisdompoint Capital Ltd, as a CIF, operates in Cyprus, offering brokerage services to its clients and has 10 employees located in Cyprus.

The Company has a stable business model, and this is reflected in a well-balanced capital allocation between the Company's operations.

The Company's growth strategy focuses on its existing areas of expertise and the quality of its customer base. The Company strives for sustainable profitability consistent with its cost of capital and a balanced business model. To this end, the Company:

- Seeks to contain the volatility of its results
- Calibrates its capital ratio to ensure a significant safety margin relative to the minimum regulatory requirements
- Monitors the stability and diversification of its funding sources
- Ensures sufficient resilience in scenarios of liquidity shortages
- Tightly controls its foreign-exchange risks

The Company ensures that compliance rules are rigorously respected, especially in the area of anti-money laundering and counterterrorism financing. The Company monitors the loyalty of the behaviour of its employees with regard to customers and all its stakeholders, as well as the integrity of its investment and financial practices.

The Company considers its reputation to be an asset of great value that must be protected to ensure its sustainable development. The prevention and detection of the risk of harm to its reputation are integrated within all the Company's operating practices. The Company's reputation is protected by making its employees aware of the values of responsibility, ethical behaviour, and commitment.

## 1.5. Regulatory Supervision

The minimum capital requirements as at 31 December 2022 were calculated in accordance with the Investment Firm Regulation. All CIFs under CySEC's authority must meet the requirements with respect to capital adequacy and market discipline, which are comprised by the following:

- Law 87(I)/2017: Provision of investment services, the exercise of investment activities, the operation of regulated markets and other related matters (hereafter "the Law")
- Regulation (EU) No. 2019/2033 – Investment firm Regulation (IFR)
- Regulation (EU) No. 575/2013 – Capital Requirements Regulation
- Regulation (EU) No. 648/2012 – European Markets Infrastructure Regulation
- Directive (EU) 2019/2034 – Investment firm Directive (IFD)



- Directive (EU) 2019/878 – amending the Capital Requirements Directive IV as regards exempted entities, financial holding companies, mixed financial holding companies, remuneration, supervisory measures and powers and capital conservation measures (CRD V)
- Directive 2013/36/EU on access to the activity of credit institutions and the prudential supervision of credit institutions and investment firms, amending Directive 2002/87/EC and repealing Directives 2006/48/EC and 2006/49/EC – Capital Requirements Directive IV



## 2. Governance and Risk Management

Implementing a high-performance and efficient risk management structure is a critical undertaking for the Company, in all businesses, markets and regions in which it operates, as are maintaining a strong risk culture and promoting good corporate governance. The Company's risk management supervised at the highest level is compliant with the regulations enforced by CySEC and the European regulatory framework.

### 2.1. Risk management objectives and policies

To ensure effective risk management, the Company has adopted the Three Lines of Defence model, with clearly defined roles and responsibilities.

- **First line of defence – Risk Ownership:** It includes any business and supporting functions of an entity that generate exposure to a risk. It actively deals and manages risks as part of the daily business operations and putting the necessary controls in place so that these remain within the approved appetite risk. Risk owners are full responsible and accountable for the ongoing management of such risks that arise.
- **Second line of defence – Risk Function & Compliance:** Introduces best practise and ensure compliance as part of the second line of defence, while the risk function is responsible to ensure that all risks are under control, independent opinions on the risks that the Company is exposed and on the way that they are mitigated and challenge the risk management activities performed in the first line of defence. In general, these functions are responsible for ensuring that all the risks are managed in accordance with the risk appetite defined by the Senior Management and approved by the BoD. They must also provide guidance, advice, and independent opinion in all key risk-related matters.
- **Third line of defence – Internal Audit:** It regularly assesses policies, methods and procedures and provide assurances to the BoD that the overall internal control environment is effective and that all policies, methods and procedures are consistently applied throughout the Company.



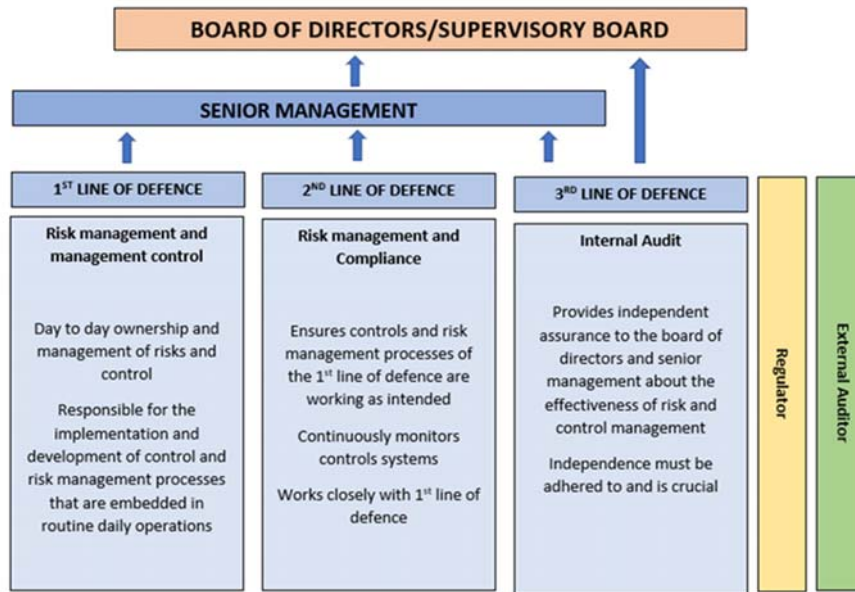


Figure 1: Three lines of Defense

## 2.2.Types of Risks

Given the diversity and evolution of the Company's activities, risk management involves the following main categories:

- **Credit and Counterparty risk** (including Country risk): risk of losses arising from the inability of the Company's customers, issuers or other counterparties to meet their financial commitments. Credit risk includes Counterparty risk linked to market transactions (Replacement risk) and securitisation activities. In addition, Credit risk may be further amplified by Concentration risk, which arises from a large exposure to a given risk, to one or more counterparties, or to one or more homogeneous groups of counterparties; Country risk arises when an exposure (loan, security, guarantee or derivative) becomes liable to negative impact from changing political, economic, social and financial conditions in the country of exposure.
- **Market risk:** risk of a loss of value on financial instruments arising from changes in market parameters, the volatility of these parameters and correlations between them. These parameters include but are not limited to exchange rates, interest rates, and the price of securities (equity, bonds), commodities, derivatives and other assets, including real estate assets.
- **Operational risks** (including Accounting and Environmental risks): risk of losses arising from inadequacies or failures in internal procedures, systems or staff, or from external events, political developments, including low-probability events that entail a high risk of loss.
- **Liquidity risk:** risk of the Company not being able to meet its cash or collateral requirements as they arise and at a reasonable cost.



- **Compliance risk** (including Legal and Tax risks): risk of legal, administrative or disciplinary sanction, or of material financial losses, arising from failure to comply with the provisions governing the Company's activities.
- **Reputational risk**: risk arising from a negative perception on the part of customers, counterparties, shareholders, investors or regulators that could negatively impact the Company's ability to maintain or engage in business relationships and to sustain access to sources of financing.
- **Strategic risk**: risks inherent in the choice of a given business strategy or resulting from the Company's inability to execute its strategy.
- **Business risk**: risk of lower than anticipated profits or experiencing losses rather than a profit.
- **IT and GDPR Risk**: Risks related to Cyber attacks and stealing of sensitive data, as well as Large-scale processing of personal information which can be unlawfully accessed and stolen.
- **ESG risk**: Risk of engaging in activities related to climate change impacts mitigation and adaptation, environmental management practices and duty of care, working and safety condition, respect for human rights, anti-bribery and corruption practices, and compliance to relevant laws and regulations.

### 2.3. Risk Appetite

The Company defines Risk Appetite as the level of risk, by type and by business that the Company is prepared to incur given its strategic targets. Risk Appetite is defined using both quantitative and qualitative criteria.

The Risk Appetite Framework takes into account earnings sensitivities to business cycles and credit, market and operational events. The Risk Appetite is one of the strategic oversight tools available to the Management bodies. It underpins the budgeting process and draws on the ICARA, which is also used to ensure capital and liquidity adequacy under stressed economic scenarios.

Furthermore, the positioning of the business in terms of risk/return ratio as well as the Company's risk profile by type of risk will be analysed and approved by the BoD. The Company's risk appetite strategy will be implemented by the Senior Management in collaboration with the BoD and applied by all divisions through an appropriate operational steering system for risks, covering:

- Governance (decision-making, management and supervisory bodies)
- Management (identification of risk areas, authorisation and risk-taking processes, risk management policies through the use of limits and guidelines, resource management)
- Supervision (budgetary monitoring, reporting, leading risk indicators, permanent controls and internal audits)

Essential indicators for determining the Risk Appetite and their adaptations will be regularly supervised over the year in order to detect any events that may result in unfavourable developments on the



Company's risk profile. Such events may give rise to remedial action, up to the deployment of the recovery plan in the most severe cases.

<b>Indicator</b>	<b>Normal 1</b>	<b>Warning 2</b>	<b>Limit 3</b>
Minimum Own Fund Requirement	≥€390k	<€390k	€330k
Common Equity Tier 1 Ratio <sup>4</sup>	>100%	<75%	56%
AT1 Capital Ratio	>125%	<100%	75%
Total Capital Ratio	>150%	<125%	100%
Liquid Assets	>€130k	<€130k	€110k
Return on Assets	≥5.00%	<5.00%	0.00%
Retained Earnings / Total Equity	≥10.00%	<10.00%	5.00%

Figure 2: Risk Appetite Areas

#### Notes

1. The level of the indicator is within the acceptable limits as per the Company's risk appetite.
2. The Company should take proactive actions in order to ensure that the level of the indicator will remain above the acceptable limits.
3. The level of the indicator falls below the acceptable limits and as such the Company should proceed with the required actions in order to restore the level of the said indicator to the normal predefined levels.
4. Additional own funds requirement and 1.50% as per the paragraph 18 of the Law 20(I)/2016 have been taken into consideration for Normal and Warning thresholds

## 2.4. Risk Strategy

The risk strategy of the Company is the responsibility of the Board, which formulates it and is responsible for monitoring its implementation. This is achieved through the development of risk management processes and procedures as well as through an assessment of the risks undertaken and the effectiveness of the risk management framework, given the Company's business model. One important characteristic of the Company's risk strategy is the alignment with the strategic and operational targets that are set by the Board.

The risks that arise from the implementation of the Company's strategic and business plans are regularly analyzed in order to ensure the adequacy of the relevant policies, procedures and systems. The risk strategy of the Company aims to provide to both Senior Management and employees a general risk framework for the management of the different types of risk in line with the overall risk management and risk bearing capacity of the Company. The Company recognizes the importance of risk management to its business' success and therefore the overall objective is to establish effective risk management policies that are able to mitigate the Company's exposure to the various risks.



## 2.5. Internal Capital Adequacy and Risk Assessment Process

The Internal Capital Adequacy Assessment Process (“ICARA”) requires institutions to identify and assess risks not adequately covered in Pillar I, maintain sufficient capital and liquidity to face these risks and apply appropriate risk-management techniques to maintain adequate capitalization on an ongoing and forward-looking basis, i.e., internal capital supply to exceed internal capital demand.

Pursuant to Chapter 2 and Paragraph 18 of the Law, the Company should establish sound, effective and comprehensive arrangements, strategies and processes to assess and maintain on an ongoing basis the amounts, types and distribution of internal capital and liquid assets that they consider adequate to cover the nature and level of risks which they may pose to others and to which the investment firms themselves are or might be exposed. These arrangements, strategies and processes shall be appropriate and proportionate to the nature, scale and complexity of the activities of the Company and they shall be subject to regular internal review.

ICARA includes a Liquidity Adequacy Assessment and Contingent Funding Plan. Internal Liquidity Adequacy Assessment Process (ILAAP) and all its components, including risk elaboration on liquidity risks that are applicable to the firm and a Liquidity stress testing will be incorporated within ICARA.

In light of the above, the new ICARA report will present the main business background aspects and developments of the Company, a summary of the Company’s business economic environment, the Company’s financial summary for the previous and upcoming years, the business and strategic goals, organisational structure and the risk management framework, the overall assessment of the material risks as well as a forward looking capital and liquidity planning.

The Company maintains compliance with the ICARA as required under Pillar II of Basel III and its local implementation in Cyprus, through risk management and governance framework, methodologies, processes and infrastructure.

The risk manager informed the Board that the ICARA report preparation has been already initiated and the capital planning is designed. It is expected that the new ICARA report will be available for review by the board in the 4<sup>th</sup> quarter of 2023.

## 2.6. Declaration of The Management Body

The Management Body is required to proceed with an annual declaration on the adequacy of the Company’s risk management framework and ensure that the risk management arrangements and systems of financial and internal control in place are in line with the Company’s risk profile. The Company’s risk management framework is designed to identify, assess, mitigate and monitor all sources of risk that could have a material impact on the Company’s operations. The Board considers that it has in place adequate systems and controls with regards to the Company’s size, risk profile and strategy and an appropriate array of assurance mechanisms, properly resourced and skilled, to avoid or minimise loss.





## 2.7. Stress Tests

Stress testing is a key risk management tool used by the Company to rehearse the business response to a range of scenarios, based on variations of market, economic and other operating environment conditions. Stress tests are performed for both internal and regulatory purposes and serve an important role in:

- Understanding the risk profile of the Company
- The evaluation of the Company's capital adequacy in absorbing potential losses under stressed conditions: This takes place in the context of the Company's ICARA on an annual basis
- The evaluation of the Company's strategy: Senior management considers the stress test results against the approved business plans and determines whether any corrective actions need to be taken. Overall, stress testing allows senior management to determine whether the Company's exposures correspond to its risk appetite
- The establishment or revision of limits: Stress test results, where applicable, are part of the risk management processes for the establishment or revision of limits across products, different market risk variables and portfolios

The ultimate responsibility and ownership of the Company's stress testing policy rests with the Board of Directors. If the stress testing scenarios reveal vulnerability to a given set of risks, the management should make recommendations to the Board of Directors for mitigation measures or actions. These may vary depending on the circumstances and include one or more of the following:

- Review the overall business strategy, risk appetite, capital and liquidity planning
- Review limits
- Reduce underlying risk positions through risk mitigation strategies
- Consider an increase in capital
- Enhance contingency planning

The Company performs financial modelling and stress analysis on a frequent basis especially when year-end financial results are available or when it revises its business plan.

The Company has performed a qualitative analysis of the material Pillar II risks, as well as weighted them against the Company's future development. By doing so, it has been deduced that in the future, whilst the probability of occurrence of any material risk is likely to remain the same, the associated/respective financial cost is likely to increase in light of the future enlargement of the organisation. The Company has thus, reached the decision that in planning its projected Capital for Pillar II purposes for the 3 years projected period, it shall maintain the same assumptions as it did in the first year's Risk Register calculations in terms of the probability of risk occurrence and probability/impact Matrix, while it will only amend the financial impact element of each risk.



## 2.8. Risk Management Committee

The Risk Management Committee (“RMC”) advises the Board of Directors on the overall strategy and the appetite to all kinds of risks, both current and future, and helps the Board when it verifies that this strategy is implemented. In particular, it is responsible for:

- Reviewing the risk control procedures and is consulted about setting overall risk limits
- Reviewing on a regular basis the strategies, policies, procedures and systems used to detect, manage and monitor the liquidity risk and submitting its conclusions to the Board of Directors
- Reviewing the policies in place and the reports prepared to comply with the regulations on internal control
- Reviewing the policy concerning risk management and the monitoring of off-balance sheet commitments, especially in light of the memoranda drafted to this end by the without prejudice to the Compensation Committee’s missions, reviewing whether the incentives provided by the compensation policy and practices are compatible with the Company’s situation with regard to the risks it is exposed to, its share capital, its liquidity and the probability and timing of expected benefits

The Company has established and adopted certain processes and mechanisms in place to manage the risks, with special consideration to risks arising from operations of the Brokerage Department in the process of receipt and transmission of client orders.

The Risk Management Committee reports directly to the Board of Directors.

The company has composed a Risk Management Committee as the DOA license was already obtained.

## 2.9. Diversity Policy

Diversity is increasingly seen as an asset to organizations and linked to better economic performance. It is an integral part of how the Company does business and imperative to commercial success.

The Company recognizes the value of a diverse and skilled workforce and management body, which includes and makes use of differences in the age, skills, experience, background, race and gender between them. A balance of these differences will be considered when determining the optimum composition.

The Company is committed to creating and maintaining an inclusive and collaborative workplace culture that will provide sustainability for the organization into the future. This is also documented as best practises in the Corporate Governance Code of many EU countries.



## 2.10. Board Recruitment

One of the BoD's main responsibilities is to identify, evaluate and select candidates for the Board and ensure appropriate succession planning. The Senior Management is assigned the responsibility to review the qualifications of potential director candidates and make recommendations to the BoD.

The persons proposed for the appointment should have specialised skills and/or knowledge to enhance the collective knowledge of the BoD and must be able to commit the necessary time and effort to fulfil their responsibilities.

Factors considered in the review of potential candidates include:

- Specialised skills and/or knowledge in accounting, finance, banking, law, business administration or related subject
- Knowledge of and experience with financial institutions (“fit-and-proper”)
- Integrity, honesty and the ability to generate public confidence
- Knowledge of financial matters including understanding financial statements and financial ratios
- Demonstrated sound business judgment
- Risk management experience

The Company has established a dedicated recruitment policy in relation to the BoD.

## 2.11. Remuneration

Remuneration refers to payments or compensations received for services or employment. The remuneration system includes the base salary and any bonuses or other economic benefits that an employee or executive receives during employment and shall be appropriate to the CIF's size, internal organization and the nature, the scope and the complexity of its activities to the provisions of the relevant Laws and Regulations.

During 2022, the Company's remuneration system is concerned with practices of the Company for those categories of staff whose professional activities have a material impact on its risk profile, i.e. the Senior Management, members of the Board of Directors and the Heads of the Departments; the said practices are established to ensure that the rewards for the ‘Executive Management’ provide the right incentives to achieve the key business aims.

The total remuneration of staff consists only of fixed and variable components. Fixed and variable components are appropriately balanced and the fixed component represents a sufficiently high proportion of the total remuneration to allow the operation of a fully flexible policy on variable remuneration components, including the possibility to pay no variable remuneration component.



<i>Figures in EUR '000</i>	<b>No. of staff as at 31/12/2022</b>	<b>Fixed</b>	<b>Variable</b>	<b>Non-cash</b>	<b>Total as at 31/12/2022</b>
<b>Back Office, Compliance</b>	6	283.98	52.40	-	<b>336.38</b>
<b>Finance, Accounting &amp; IT</b>	2	100.40	31.10	-	<b>131.50</b>
<b>Customer Support</b>	-	-	-	-	-
<b>Senior Management and other staff whose actions have a material impact on the risk profile of the Institution</b>	2	154.93	63.00	-	<b>217.93</b>
<b>Grand Total</b>	<b>10</b>	<b>539.31</b>	<b>146.50</b>	-	<b>685.81</b>

Table 3: Aggregate Quantitative Information on Remuneration broken down by business area

## 2.12. Performance Related Pay

The Company shall ensure that where remuneration is linked with performance, the total amount of remuneration is based on a combination of the assessment of the performance of:

- The individual
- The business unit concerned
- The overall results of the Company

Examples of qualitative criteria include compliance with regulatory requirements (especially conduct of business rules) and internal procedures, fair treatment of clients and client satisfaction.

The Company implements a performance appraisal program, mainly to foster talent and promote healthy competition amongst personnel, which is based on a set of Key Performance Indicators and Targets, developed for each department.

The remuneration Committee ensures that any forms of performance related pay schemes do not give rise to any potential conflict of interest between the firm and the employees or the firm and the clients.



### 2.13. Directorships held by Members of the Management Body

In 2022, the members of the Management body of the Company, given their industry experience, have been taking seats in other Company boards. In line with this, the following table indicates the number of positions that each member holds:

No.	Position in the Company	Directorships (Executive)	Directorships (Non-Executive)
1.	Executive Director	1	0
2.	Executive Director	1	0
3.	Non-Executive Director	1	2
4.	Non-Executive Director	1	2

Table 4: Directorships held by Members of the Management Body



## 2.14. Reporting and Control

In line with the requirements set out in the Cyprus Investment Firms Law and subsequent Directives, the Company has been able to maintain a good information flow to the Management body, as it can be seen below:

Report Name	Report Description	Owner	Recipient	Frequency	Due Date
<b>Annual Compliance Report</b>	To inform the Senior Management & the BoD of the Company regarding the Performance of Compliance function during the year	Compliance Officer	BoD, CySEC	Annual	<b>30/04/2023</b>
<b>Annual Internal Audit Report</b>	To inform the Senior Management & the BoD of the Company regarding the Internal Auditor during the year	Internal Auditor	BoD, CySEC	Annual	<b>30/04/2023</b>
<b>Annual Risk Management Report</b>	Represents the work & activities undertaken by the Risk Manager during the year	Risk Manager	BoD, CySEC	Annual	<b>30/04/2023</b>
<b>Pillar III Disclosures (Market Discipline and Disclosures)</b>	The Company is required to disclose information regarding its risk management, capital structure, capital and liquidity adequacy and risk exposures	Risk Manager	BoD, CySEC, Public	Annual	<b>30/04/2023</b>
<b>Independent Auditors Verification on the Pillar III Report</b>	The verification of the Pillar III Disclosures (Market Discipline and Disclosures) Report by the Independent Auditor	External Auditor	BoD, CySEC	Annual	<b>31/05/2023</b>
<b>Financial Reporting</b>	It is a formal record of the financial activities of the CIF	External Auditor	BoD, CySEC	Annual	<b>30/04/2023</b>
<b>Capital Adequacy Reporting</b>	A measure of the CIF's capital. It is expressed as a percentage and is used to protect depositors and promote the stability and efficiency of financial systems all over the world	Risk Manager / Accounting	Senior Management, CySEC	Quarterly	<b>11/02/2023</b> <b>12/05/2023</b> <b>11/08/2023</b> <b>11/11/2023</b> <b>31/05/2023</b>
<b>ICARA (Pillar II) Report</b>	The Internal Capital Adequacy Assessment Process, relating to the monitoring and assessment of the risks that are not fully covered by Pillar I	Risk Manager	BoD, CySEC	Annual	<b>N/A</b>

Table 5: Periodic Reporting Summary



### 3. Capital Management and Adequacy

#### 3.1. The Regulatory Framework

In response to the financial crisis of recent years, the Basel Committee, mandated by the G20, has defined the new rules governing capital and liquidity aimed at making the financial sector more resilient. The new Basel III rules were published in December 2010. They were translated into European law by a directive (CRDIV) and a regulation (CRR), which were replaced by The Investment Firm Regulation, and the Investment Firm Directive on 26th of June 2021.

The general framework defined by Basel III is structured around three pillars, as in Basel II:

- Pillar I sets the minimum solvency requirements and defines the rules that institutions, that are required to comply with the regulation, must use to measure risks and calculate associated capital requirements, according to standard or more advanced methods
- Pillar II relates to the discretionary supervision implemented by the competent authority, which allows them – based on a constant dialogue with supervised credit institutions – to assess the adequacy of capital requirements as calculated under Pillar I, and to calibrate additional capital requirements with regard to risks
- Pillar III encourages market discipline by developing a set of qualitative or quantitative disclosure requirements which will allow market participants to make a better assessment of a given institution's capital, risk exposure, risk assessment processes and, accordingly, capital adequacy

In terms of capital, the main new measures introduced to strengthen institutions' solvency were as follows:

- The complete revision and harmonisation of the definition of capital, particularly with the amendment of the deduction rules, the definition of a standardised Common Equity Tier 1 (or CET1) ratio, and new Tier 1 capital eligibility criteria for hybrid securities
- New capital requirements for the counterparty risk of market transactions, to factor in the risk of a change in CVA (Credit Value Adjustment) and hedge exposures on the central counterparties (CCP)
- The set-up of capital buffers that can be mobilised to absorb losses in case of difficulties. The new rules require regulated liquidity providers to create and maintain a capital conservation buffer and allows supervisory authorities to enforce an additional countercyclical buffer, aimed to preserve the institution's solvency in the event of adverse conditions
- The set-up of restrictions on distributions, relating to dividends, Additional Tier 1 instruments and variable remuneration, via the maximum distributable amount (MDA) mechanism. At end-2015, the European Banking Authority (EBA) issued a clarifying statement, which indicated that the MDA should be applied when an institution no longer complies with its CET1 ratio requirements, including those of Pillar II and capital buffers
- In addition to these measures, there will be measures to contain the size and consequently the use of excessive leverage. To this end, the Basel Committee defined a leverage ratio, for which the definitive regulations were published in January 2014. The Basel leverage ratio compares the



institution's Tier 1 capital to the balance sheet and off-balance sheet items, with restatements for derivatives and pensions. Full scope institutions have been obliged to publish this ratio since 2015.

### 3.2. Regulatory Capital

According to the International Financial Reporting Standards (IFRS), the Company's regulatory capital consists of Common Equity Tier 1 and Tier 2 Capital.

#### Common Equity Tier 1 Capital (CET1 Capital)

According to IFRS, Common Equity Tier 1 capital is made up primarily of the following:

- Ordinary shares (net of repurchased shares and treasury shares) and related share premium accounts
- Retained earnings
- Other reserves
- Funds for general banking risk

Deductions from Common Equity Tier 1 capital essentially involve the following:

- Losses for the current financial year
- Goodwill and intangible assets
- Deferred tax assets that rely on future profitability
- All investments in own CET1 instruments, whether held directly or indirectly
- Non-significant & significant holdings of CET1 capital of financial sector entities - FSEs
- Investors' Compensation Fund ('ICF') & the additional cash buffer of ICF

#### Tier 2 Capital

Tier 2 capital includes:

- Capital Instruments including subordinated loans as that qualify as Tier 2 instruments
- Share premium resulting from the issue of instruments included in the Tier 2 capital
- General Credit risk adjustments of up to a maximum of 1.25% of credit risk RWAs calculated under the standardised approach

Deductions of Tier 2 capital essentially apply to the following:

- All investments in own T2 instruments, whether held directly or indirectly
- Non-significant holdings of T2 capital of FSEs (only BB holdings)
- Significant holdings of T2 capital of FSEs

### 3.3. Solvency Ratio (Capital Ratio or Capital Adequacy Ratio)

The solvency ratio is calculated by comparing the institutions' equity with the Higher of the K-Factor Requirement, the Fixed Overheads requirement, and the Permanent minimum capital requirement.

Since 26th of June 2021, the new regulatory framework sets minimum requirements to be met for the CET1 ratio and the Tier 1 ratio. The minimum requirement for CET1 is 56% and that of Tier 1 75%, with an overall ratio of 100% (including Tier 2).





### 3.4. Capital Management

Capital management is implemented by the Senior Management. As part of managing its capital, the Company ensures that its solvency level is always compatible with the following objectives:

- Maintaining its financial solidity and respecting the Risk Appetite targets
- Preserving its financial flexibility to finance organic growth
- Adequate allocation of capital among the various business lines according to the Company's strategic objectives
- Maintaining the Company's resilience in the event of stress scenarios
- Meeting the expectations of its various stakeholders: supervisors, debt and equity investors, rating agencies, and shareholders

The Company determines its internal solvency targets in accordance with these.

In line with the above, the Company is obligated to calculate and report on a quarterly basis (see section on Reporting and Control), under IFR, its capital requirements, which is the higher of the Permanent minimum capital requirement, fixed overhead requirement and the K-Factor requirement, the result of which, i.e. solvency/capital ratio, needs to be above 100% (Calculated based on the section above) at all times.

As at 31 December 2022, the total own funds ratio of the Company was 2171.21%.



<b>EUR</b>	<b>Dec 31, 2022 (Audited)</b>
CAR Ratio	2171.21%
CAR Ratio surplus	2071.21%
CAR Ratio (including transitional requirements)	2171.21%
CAR Ratio surplus (including transitional requirements)	2071.21%
Capital Adequacy (CET1) ratio	2171.21%
CET1 Capital	7,165,000
Tier 1 Capital	7,165,000
Tier 2 Capital	-
Total Own Funds	7,165,000
Total Own Funds surplus	7,165,000
Permanent minimum capital requirement	150,000
K-Factor Requirement	205,534
Fixed Overhead Requirement	330,000
Capital requirement	330,000
Capital requirement (including transitional requirements)	330,000

Table 6: Capital Requirements



	<b>Dec 31, 2022</b>
<b>Common Equity Tier 1 (CET 1) capital: instruments and reserves</b>	<b>EUR</b>
Capital instruments and the related share premium accounts	2,200,000
Retained earnings	3,359,000
Accumulated other comprehensive income (loss), net of tax	0
Other	1,636,000
Common Equity Tier 1 (CET 1) capital before regulatory adjustments	7,195,000
<b>Common Equity Tier 1 (CET 1) capital: regulatory adjustments</b>	<b>EUR</b>
Goodwill and other intangible assets (net of related tax liabilities)	-1,000
Deferred tax assets that rely on future profitability and do not arise from temporary differences net of associated tax liabilities	0
Direct, indirect and synthetic holdings by the institution of the CET 1 instruments of financial sector entities	0
Other regulatory adjustments	-29,000
Total regulatory adjustments to Common Equity Tier 1 (CET 1) capital	-30,000
Common Equity Tier 1 (CET 1) capital	7,165,000
Additional Tier 1 Capital	0
Tier 1 Capital	7,165,000
Tier 2 Capital	0
Total Capital	7,165,000
<b>Capital Ratios</b>	
Common Equity Tier 1 (CET 1) capital ratio	2171.21%
Tier 1 Capital ratio	2171.21%
Total Capital ratio	2171.21%
CET 1 Ratio (including transitional requirements)	2171.21%
Tier 1 Ratio (including transitional requirements)	2171.21%
Own Funds Ratio (including transitional requirements)	2171.21%

Table 7: Regulatory Capital



## 4. Capital Requirements

In accordance with the Investment firm regulation, the Capital requirement for the company is equal to the highest of the following:

- K-Factor Requirement
- Permanent Minimum Capital Requirement
- Fixed Overheads Requirement

As at 31 December 2022, the Company's Capital requirement was equal to the Permanent Minimum Capital requirement which is equal to EUR 150,000, according to the IF's license. However, due to the transitional requirements, the permanent minimum capital requirement (PMCR) will be fully in effect by 26th of June 2026, increasing by EUR 5,000 each year of the transitional period and therefore the Company's Capital requirement was equal to EUR 130,000 as at the end Q4 2022.

### 4.1 K-Factor Requirement

The Company calculates its own funds requirement by reference to a set of K-factors which capture:

**Risk-To-Client ('RtC')** which captures client assets under management and ongoing advice (K-AUM), client money held (K-CMH), assets safeguarded and administered (K-ASA), and client orders handled (K-COH).

**Risk-to-Market ('RtM')** which captures the net position risk (K-NPR) in accordance with the market risk provisions of Regulation (EU) No 575/2013.

**Risk-to-Firm ('RtF')** which captures an investment firm's exposure to the default of their trading counterparties (K-TCD), concentration risk in an investment firm's large exposures to specific counterparties (K-CON), and operational risks from an investment firm's daily trading flow (K-DTF).

The K-Factor breakdown, as at 31 December 2022, can be seen on the table below.



EUR	K-factor Requirement
<b>TOTAL K-FACTOR REQUIREMENT</b>	205,534
<b>Risk to client</b>	111,374
Assets under management	-
Client money held - Segregated	62,153
Client money held - Non-segregated	-
Assets safeguarded and administered	32,695
Client orders handled - Cash trades	10
Client orders handled - Derivatives Trades	16,517
<b>Risk to market</b>	94,160
K-Net positions risk requirement	94,160
Clearing margin given	-
<b>Risk to firm</b>	-
Trading counterparty default	-
Daily trading flow - Cash trades	-
Daily trading flow - Derivative trades	-
K-Concentration risk requirement	-

Table 8: K-Factor Breakdown

## 4.2 Liquidity Requirement

As a Class 2 investment firm, the Company is required to hold an amount of liquid assets equivalent to at least one third of the fixed overheads requirement. The purpose is to ensure that the investment firms have an adequate stock of unencumbered high-quality liquid assets that can be converted easily and immediately in private markets in cash to meet their liquidity needs for a 30-calendar day liquidity stress scenario. The IFR specifies the instruments that are eligible to be qualified as liquid assets to be included in the calculation of the said ratio:

- Coins and banknotes
- Claims on ECB or other Central Banks
- High Quality Covered Bonds
- Shares or units in CIUs

In this respect and as per the Company's latest audited financial statements, the Company has the following liquid assets which is well above the 1/3 of the total fixed overheads requirement.



<b>Table 18: Liquidity Requirements Item</b>	<b>€'000</b>
Liquid Assets	1,319
<b>Total</b>	1,319
Requirement (1/3 of Fixed Overheads Requirement)	110
<b>Surplus</b>	1,209

Table 9: Liquidity Requirements

The liquidity of the company can be assessed using the Liquidity Coverage Ratio (LCR) which is calculated as follows and should always be equal or greater than 100%:

$$\frac{\text{Stock of HQLA}}{\text{Total net cash outflows over the next 30 calendar days}} \geq 100\%$$

The Company's liquid assets were mainly constituted by Unencumbered short-term deposits/CET1 capital. The LCR stood at 1199% the figure shows that the company can more than adequately withstand any unexpected stress scenario that requires liquidity to be available to mitigate it.



## 5. Operational Risk

Operational risks (including accounting and environmental risks) correspond to the risk of losses arising from inadequacies or failures in internal procedures, systems or staff, or from external events, including low-probability events that entail a high risk of loss. This section describes the monitoring of the Company's operational risk, in addition to providing an analysis of the Company's operational risk profile and regulatory capital requirements.

The Company has developed processes, management tools and a control infrastructure to enhance the Company-wide control and management of the operational risks that are inherent in its various activities. These include, among others, general and specific procedures, permanent supervision, business continuity plans and functions dedicated to the oversight and management of specific types of operational risks, such as fraud, risks related to external service providers, legal risks, information system security risks and compliance risks.

In order to control the exposure to operational risks, the management has established two key objectives:

- To minimise the impact of losses suffered, both in the normal course of business (small losses) and from extreme events (large losses).
- To improve the effective management of the Company and strengthen its brand and external reputation.

The Company recognises that the control of operational risk is highly dependent on the effective and efficient management practices and high standards of corporate governance.

To that effect, the management of operational risk is geared towards:

- Maintaining a strong internal control governance framework.
- Managing operational risk exposures through a consistent set of processes that drive risk identification, assessment, control and monitoring.

The Company implements the below Operational Risk Mitigation Strategies in order to minimize its Operational Risk Exposure:

- The development of operational risk awareness and culture
- The provision of adequate information to the Company's management, in all levels, in order to facilitate decision making for risk control activities
- The implementation of a strong system of internal controls to ensure that operational losses do not cause material damage to the Company and have a minimal impact on profitability and objectives
- The improvement of productivity, efficiency and cost effectiveness, with an objective to improve customer service and protect shareholder value



- Established a “four-eye” structure and board oversight. This structure ensures the separation of power regarding vital functions of the Company namely through the existence of a Senior Management. The Board further reviews any decisions made by the Management while monitoring their activities
- Detection methods are in place in order to detect fraudulent activities
- Comprehensive business contingency and disaster recovery plan

The Senior Management employs specialized tools and methodologies to identify, assess, mitigate and monitor operational risk. These specialized tools and methodologies assist operational risk management to address any control gaps. To this effect, the following are implemented:

- Incident collection
- Key Risk Indicators
- Business Continuity Management
- Training and awareness

### **5.1.Fixed Overheads Risk**

Fixed Overhead Risk is the risk that the company holds sufficient eligible capital to accommodate fluctuations in a firm's levels of business. The requirement is to hold eligible capital of at least one-quarter of the fixed overheads of the previous year. For the operational risk in relation to the capital adequacy returns, the Company now uses the fixed overhead requirement, which is taken into account if and only if the summation of credit and market risk falls below a calculated limit of Fixed overheads.

The risks and uncertainties faced by the company are those inherent to the industry. The Board seeks to mitigate this risk by constant review and strict control of fixed overhead costs by optimising resources and reducing unnecessary expenses.

As at 31 December 2022, the Fixed overheads capital requirement was 330,000EUR.





## 6. External Environment Risks

### 6.1. Pandemic Risk

Further to the recent developments of the COVID-19 outbreak, which is a current major worldwide issue, the Company follows all of the government and health authorities' guidelines and instructions, regarding the protection measures against the virus. Moreover, the company implements additional health and safety measures enabling the company to continue its operations in a smooth and moderate manner.

Furthermore, the company has adapted a dynamic business model, ready to withstand possible market volatilities and anomalies, that are caused due to the rapid developments of the virus.

### 6.2. Political Risks

The consequences of the Russian-Ukrainian conflicts, and the sanctions imposed by the European Council against Russia considerably affected the industry. The Company's governance and controls that are in place aim to protect the company from risks associated with the said conflict. The conflict had no effect on the company's operations and financial performance.

## 7. Information Technology Risk

Information Technology risk ("IT") could occur due to inadequate information technology and processing, or arise from an inadequate IT strategy and policy or inadequate use of the Company's IT. The evaluation of the adequateness of Company's systems is performed by the Internal Auditor.

The Company maintains generally adequate systems, whilst procedures for access level authorisation in electronic systems/databases are properly in place. In addition to this, the Company has taken and implemented measures regards to back-up systems, maintenance, data protection procedures and disaster recovery plan.

## 8. Liquidity risk

Liquidity risk corresponds to the risk of the Company not being able to meet its cash or collateral requirements as they arise and at a reasonable cost.

The Company's primary objective is to ensure the funding of its activities in the most cost-effective way by managing liquidity risk and adhering to regulatory constraints. The liquidity system aims at providing a balance sheet framework with assets and liabilities target structure that is consistent with the risk appetite defined by the Board of Directors:

- The assets structure should allow the businesses to develop their activities in a way that is liquidity-efficient and compatible with the target liabilities structure



- The liabilities structure is based on the ability of the businesses to collect financial resources from customers and the ability of the Company to sustainably raise financial resources on the markets, in accordance with its risk appetite

The principles and standards applicable to the management of liquidity risks are defined by the Company's governing bodies, whose duties in the area of liquidity are listed below:

- The Company's Board of Directors (i) establishes the level of liquidity risk tolerance as part of the Risk Appetite exercise, (ii) meets regularly to examine the Company's liquidity risk situation, on a quarterly basis
- The Senior Management (i) sets budget targets in terms of liquidity (ii) allocates liquidity to the pillars

To minimize its exposure to liquidity risk, the CIF implements the below Liquidity Risk Mitigation Strategies:

- Regular reporting to the Board of Directors on the funding needs of the Company
- Monitoring of the Company's exposures and diversification to avoid rise of concentration risk as per the internal policies
- Cash Management

The Company has undertaken a specific review of its liquidity risks and believes that it is able to meet its upcoming maturities. As at 31/12/2022, the Company held enough capital in its bank accounts, to meet its short-term obligations.

Furthermore, the Company is taking due care in safeguarding the client assets held in fiduciary capacity (in segregated accounts) and performs the following mitigation strategies:

- These assets are held by the Company in a fiduciary capacity and are not included in the Company's funds nor its financial statements
- The funds are held in client segregated bank accounts
- Frequent reconciliations are performed internally



## 9. Compliance, Reputational and Legal Risks

Compliance risk (including legal and tax risks) corresponds to the risk of legal, administrative or disciplinary sanction, or of material financial losses, arising from failure to comply with the provisions governing the Company's activities.

Compliance means acting in accordance with applicable regulatory rules, as well as professional, ethical and internal principles and standards. Fair treatment of customers, with integrity, contributes decisively to the reputation of the Company.

By ensuring that these rules are observed, the Company works to protect its customers and, in general, all of its counterparties, employees, and the various regulatory authorities to which it reports.

### Compliance System and Department

Independent compliance structures have been set up within the Company's different business lines around the world to identify and prevent any risks of non-compliance.

The Compliance Officer verifies that all compliance laws, regulations and principles applicable to the Company's services are observed, and that all staff respect codes of good conduct and individual compliance. The Compliance Officer also monitors the prevention of reputational risk and provides expertise for the Company performs controls at the highest level and assists with the day-to-day operations. The Compliance Officer is responsible for:

- The Company's financial security (prevention of money laundering and terrorism financing; know-your-customer obligations; embargoes and financial sanctions)
- Developing and updating consistent standards for the function, promoting a compliance culture, coordinating employee training and managing Company regulatory projects
- Coordinating a compliance control mechanism within the Company (second-level controls), overseeing a normalised Compliance process, oversight of personnel operations and, finally, managing large IT projects for the function
- Preventing and managing conflicts of interest
- Proposing ethical rules to be followed by all Company employees
- Training and advising employees and raise their awareness of compliance issues
- Building and implementing steering and organisational tools for the function: Compliance and Reputational Risk dashboards, forums to share best practices, meetings of functional compliance officers
- Generally monitoring subjects likely to be harmful to the Company's reputation



## 9.1. Compliance Transformation Programme

In light with the changes arising from MiFID II, which came into force since January 1<sup>st</sup>, 2018, the Company launched a programme to transform and improve the Compliance function, in particular to raise the monitoring standards and better fulfil the increasing requirements of regulatory authorities.

Among other things, this programme strengthened governance and increased the resources made available to the function, both by recruiting additional resources and by investing in streamlining the Compliance function's existing IT applications and strengthening alert controls and management.

It targets the continued enhancement of priority functions, the central tools for monitoring regulatory application (including training, harmonisation, and regulatory oversight), financial security, constant oversight, customer protection, market integrity (including preventing conflicts of interest), and reporting quality.

## 9.2. Prevention of Money Laundering and Terrorism Financing

Money laundering and terrorist financing risk mainly refers to the risk where the Company may be used as a vehicle to launder money and/or assist/involved in financing terrorism.

The Company has in place and is updating as applicable, certain policies, procedures and controls in order to mitigate the money laundering and terrorist financing risks. Among others, these policies, procedures and controls include the following:

- The adoption of a risk-based approach that involves specific measures and procedures in assessing the most cost effective and appropriate way to identify and manage the Money Laundering and Terrorist Financing risks faced by the Company
- The adoption of adequate Client due diligence and identification procedures in line with the Clients' assessed Money Laundering and Terrorist Financing risk
- Setting certain minimum standards of quality and extent of the required identification data for each type of Client (e.g. documents from independent and reliable sources, third party information)
- Obtaining additional data and information from Clients, where this is appropriate and relevant, for the proper and complete understanding of their activities and source of wealth and for the effective management of any increased risk emanating from a particular Business Relationship or an Occasional Transaction
- Monitoring and reviewing the business relationship or an occasional transaction with clients and potential clients of high-risk countries
- ensuring that the Company's personnel receive the appropriate training and assistance

The Company is frequently reviewing its policies, procedures and controls with respect to money laundering and terrorist financing to ensure compliance with the applicable legislation and incorporated, as applicable, any new information issued/available in this respect.



## 10. Environmental Social and governance Risk

For investment firms that deal in financial instruments on their own account, ESG risks may manifest on their balance sheets through investment activities. In this case, ESG risks may materialise in a number of different risk metrics monitored under the IFD such as net position risk or daily trading flows.

For investment firm services and activities other than dealing on own account, e.g. portfolio management and investment advice, ESG factors may affect the risk profile of the investment firms through the financial performance of their clients' portfolios. In this case, this impact would come from fees and commissions and other monetary gains that the investment firms may generate from the provision of these investment services and activities.

Similarly, the materialisation of ESG risks would manifest in different risk metrics that are monitored, for example, assets under management.

The company, based on the above criteria, does not engage in investment activities that require ESG metrics to be reported. However, the company aims at directing its clients towards investments that are ESG friendly and promote ESG practices within the organization itself, that reduce the carbon footprint left from the premises, employees and activities of the firm.



## 11. Appendix

	(a)	(b)
	Amounts	Source based on reference numbers/letters of the balance sheet in the audited financial statements
<b>Common Equity Tier 1 (CET1) capital: instruments and reserves</b>		
1	<b>OWN FUNDS</b>	
2	<b>TIER 1 CAPITAL</b>	
3	<b>COMMON EQUITY TIER 1 CAPITAL</b>	
4	Fully paid up capital instruments	N/A
5	Share premium	N/A
6	Retained earnings	Share capital
7	Accumulated other comprehensive income	Share premium
8	Other reserves	Retained earnings/(accumulated losses)
9	Minority interest given recognition in CET1 capital	
10	Adjustments to CET1 due to prudential filters	1,636,000
11	Other funds	Non-refundable advances
12	(-) TOTAL DEDUCTIONS FROM COMMON EQUITY TIER 1	-
13	(-) Own CET1 instruments	-
14	(-) Direct holdings of CET1 instruments	-
15	(-) Indirect holdings of CET1 instruments	-
16	(-) Synthetic holdings of CET1 instruments	-
17	(-) Losses for the current financial year	-
18	(-) Goodwill	-
19	(-) Other intangible assets	(1,000)
20	(-) Deferred tax assets that rely on future profitability and do not arise from temporary differences net of associated tax liabilities	Intangible assets
21	(-) Qualifying holding outside the financial sector which exceeds 15% of own funds	-
22	(-) Total qualifying holdings in undertaking other than financial sector entities which exceeds 60% of its own funds	-
23	(-) CET1 instruments of financial sector entities where the institution does not have a significant investment	-
24	(-) CET1 instruments of financial sector entities where the institution has a significant investment	-
25	(-) Defined benefit pension fund assets	-
26	(-) Other deductions	(29,000)
27	CET1: Other capital elements, deductions and adjustments	Contributions to Investors compensation fund
28	<b>ADDITIONAL TIER 1 CAPITAL</b>	
29	Fully paid up, directly issued capital instruments	
30	Share premium	
31	(-) TOTAL DEDUCTIONS FROM ADDITIONAL TIER 1	
32	(-) Own AT1 instruments	
33	(-) Direct holdings of AT1 instruments	
34	(-) Indirect holdings of AT1 instruments	
35	(-) Synthetic holdings of AT1 instruments	
36	(-) AT1 instruments of financial sector entities where the institution does not have a significant investment	
37	(-) AT1 instruments of financial sector entities where the institution has a significant investment	
38	(-) Other deductions	
39	Additional Tier 1: Other capital elements, deductions and adjustments	(29,000)
40	<b>TIER 2 CAPITAL</b>	
41	Fully paid up, directly issued capital instruments	
42	Share premium	
43	(-) TOTAL DEDUCTIONS FROM TIER 2	
44	(-) Own T2 instruments	
45	(-) Direct holdings of T2 instruments	
46	(-) Indirect holdings of T2 instruments	
47	(-) Synthetic holdings of T2 instruments	
48	(-) T2 instruments of financial sector entities where the institution does not have a significant investment	
49	(-) T2 instruments of financial sector entities where the institution has a significant investment	
50	Tier 2: Other capital elements, deductions and adjustments	

Table 10: EU IF CCI.01 – Composition of regulatory own funds



		a	b	c
		Balance sheet as in published/audited financial statements	Under regulatory scope of consolidation	Cross reference to EU IF CC1
		As at period end	As at period end	
<b>Assets - Breakdown by asset classes according to the balance sheet in the published/audited financial statements</b>				
1	Property, plant and equipment	€ 17,200	N/A	N/A
2	Right-of-use assets	€ 38,657	N/A	N/A
3	Intangible assets	€ 926	N/A	N/A
4	Contribution to Investors compensation fund	€ 29,218	N/A	N/A
5	Trade and other receivables	€ 6,529,024	N/A	N/A
6	Shareholders' current accounts - debit balances	€ 18,869	N/A	N/A
7	Cash and cash equivalents	€ 1,146,139	N/A	N/A
	<b>Total Assets</b>	<b>€ 7,780,033</b>		
<b>Liabilities - Breakdown by liability classes according to the balance sheet in the published/audited financial statements</b>				
1	Lease liabilities	€ 0	N/A	N/A
2	Trade and other payables	€ 524,077	N/A	N/A
3	Lease liabilities	€ 39,727	N/A	N/A
4	Current tax liabilities	€ 21,112	N/A	N/A
	<b>Total Liabilities</b>	<b>€ 584,916</b>		
<b>Shareholders' Equity</b>				
1	Share capital	€ 1,000,240	N/A	4
2	Share premium	€ 1,199,760	N/A	5
3	Non-refundable advances	€ 1,636,453	N/A	8
4	Retained earnings	€ 3,358,664	N/A	6
	<b>Total Shareholders' equity</b>	<b>€ 7,195,117</b>		

Table 11: EU IFCC2: Own funds: reconciliation of regulatory own funds to balance sheet in the audited financial statements.

